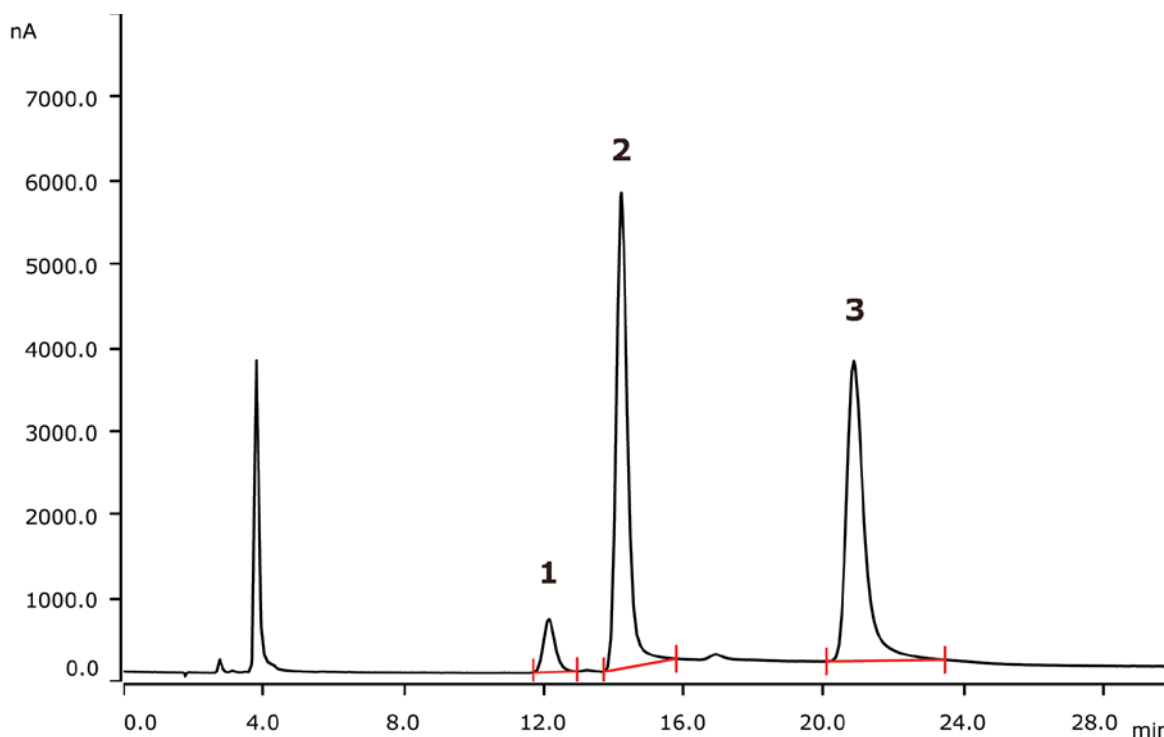


IC-amperometric analysis of sugar in apple juice according to EU regulation 1169/2011



The EU Regulation 1169/2011 lays out specifications for nutrition labelling. Therein, sugar is a major aspect, given its role relating to human health. This Application Note shows the determination of sugars in apple juice on a Metrosep Carb 2 - 150/2.0 column.

Results

	Compound	Concentration [g/kg]	RSD (% , n = 3)
1	Sucrose	4.9	1.2
2	Glucose	26.5	1.0
3	Fructose	57.5	3.1

Sample

Apple juice

Sample preparation

Dilution 1:1000 with ultrapure water. Injection after Inline Ultrafiltration.

Columns

Metrosep Carb 2 - 150/2.0	6.01090.220
Metrosep Carb 2 Guard/2.0	6.01090.600
Metrosep CO ₃ ²⁻ Trap 1 - 100/4.0	6.1015.300

Solutions

Eluent	5 mmol/L sodium hydroxide 2 mmol/L sodium acetate
--------	--

Parameters

Flow rate	0.13 mL/min
Injection volume	5 µL
Recording time	30 min
Column temperature	40 °C

PAD Parameters

Cell	Wall-Jet cell
Working electrode	Gold
Reference electrode	Palladium
Spacer	50 µm
Measuring potential	0.05 V
Measuring duration	100 ms
Cycle duration	550 ms
Measuring range	200 µA
Temperature	35 °C
Mode	PAD

Analysis

Pulsed amperometric detection

Instrumentation

930 Compact IC Flex Oven/Deg	2.930.2160
IC Amperometric Detector	2.850.9110
858 Professional Sample Processor	2.858.0020
IC equipment Wall-Jet cell: Carb (Au, Pd)	6.5337.010
IC equipment: Inline Ultrafiltration	6.5330.110

